

# Cross Stitching Art



## “Easter Morning Delivery”

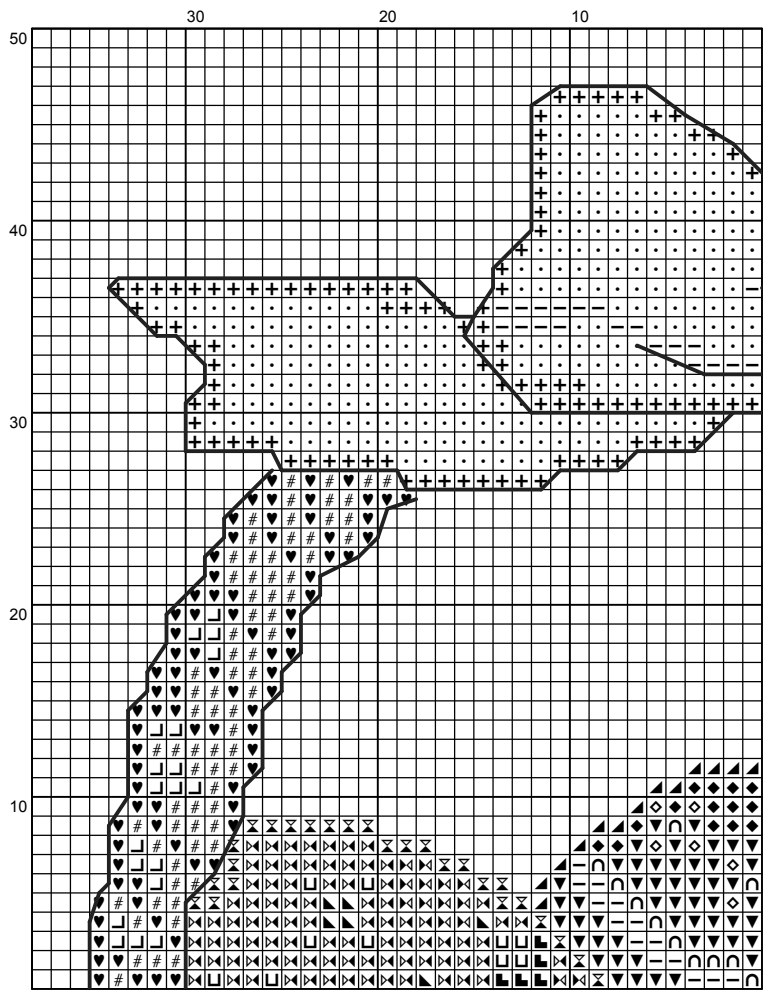
A design by Cross Stitching Art in counted cross stitch

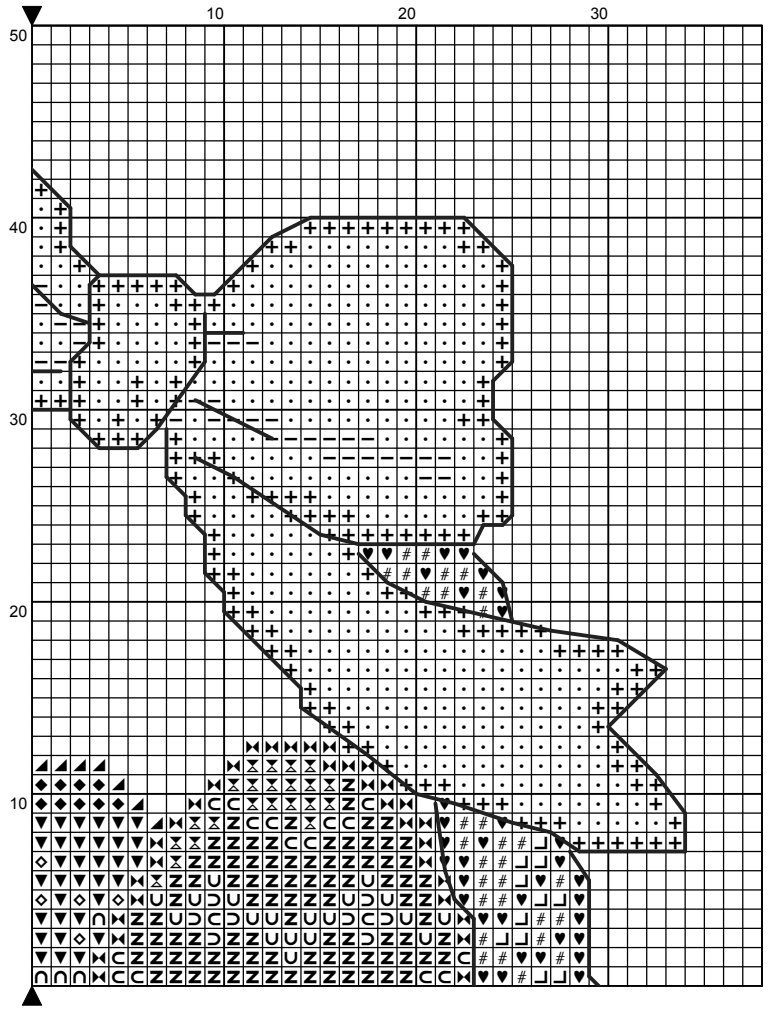
Pattern stitched on 14 count Aida, cream. DMC Threads used, 23 colors. Package contains color chart and detailed instructions.

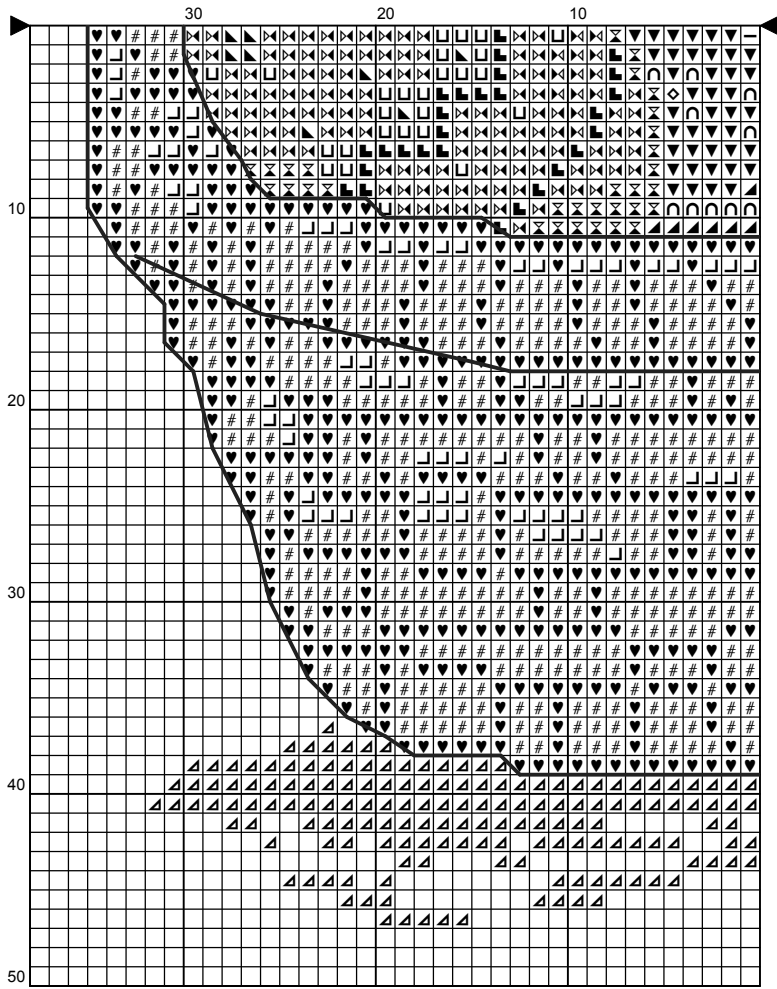
Finished Size: 5.00 x 6.71 inches or 12.70 x 17.05 cm.

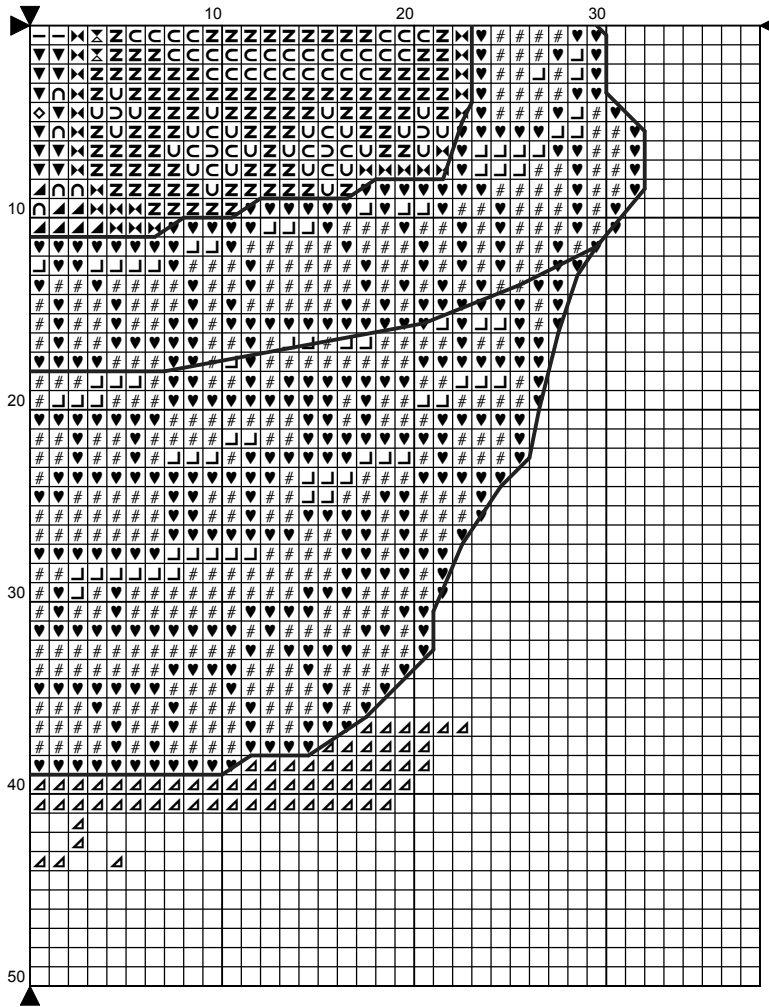
Size in Stitches: 70 W x 94 H

For more patterns, please visit our online store at  
[www.crossstitchingart.com](http://www.crossstitchingart.com)









# Instructions and Symbol Key for Design "Easter Morning Delivery"

**Fabric:** 14 count Aida

**Stitches:** 70 x 94                      **Size:** 5.00 x 6.71 inches or 12.70 x 17.05 cm

**Colours:** DMC


Use 2 strands of thread for cross stitch

| Sym | No.  | ColourName         | Sym | No.  | Colour Name         |
|-----|------|--------------------|-----|------|---------------------|
| +   | 777  | Wine red           | ⌘   | 728  | Hops yellow         |
| ♥   | 838  | Dark wood          | #   | 840  | Hare brown          |
| ·   | 3801 | Tulip red          | Z   | 444  | Bright yellow       |
| ⊗   | 726  | Mimosa yellow      | ⊗   | 3842 | Deep Wedgewood blue |
| ⌘   | 3843 | Swimming pool blue | ⌘   | 3846 | Light turquoise     |
| U   | 912  | Peppermint green   | ∩   | 966  | Baby green          |
| C   | 946  | Fire orange        | —   | 304  | China red           |
| L   | 841  | Deer brown         | ▼   | 210  | Light violet        |
| ◆   | 211  | Pale violet        | ◇   | 3804 | Dark fischia pink   |
| ∩   | 3833 | Light strawberry   | ▲   | 209  | Lilac               |
| ▲   | 3756 | Cloud blue         | ⌚   | 775  | Summer rain blue    |
| ⌚   | 3834 | Grape              |     |      |                     |

Use 2 strands of thread for Half Cross Stitches

| Sym | No. | ColourName | Sym | No. | ColourName |
|-----|-----|------------|-----|-----|------------|
| ▲   | 310 | Black      |     |     |            |

Use 1 strand of thread for backstitch

|  |         |       |
|--|---------|-------|
|  | DMC 310 | Black |
|--|---------|-------|

This chart has been designed and printed with our best intentions of being without mistakes. However, the possibility of human error, printing mistakes or the variation of individual stitching does exist, and we regret that we cannot be responsible for this.

Cross Stitching Art - *The Joy of Making Art with Threads and Needle!*  
For more designs please visit our online store at [www.crossstitchingart.com](http://www.crossstitchingart.com)

This chart, or any part of this design may not be reproduced in whole or in part in any form.  
The design is for your personal use only and may not be used for re-sale, re-kit, or re-distribution in any form.

Copyright ©Cross Stitching Art 2010 All rights reserved.