

# Cross Stitching Art



## “Feathered Family”

A design by Cross Stitching Art in counted cross stitch

Suggested Fabric is 28 or 32 count Linen or Evenweave.

Finished size: 5.00 x 7.07 inches or 12.70 x 17.96 cm on 28 count. Stitched area: 70 x 99.

Materials used: 20 DMC colors.

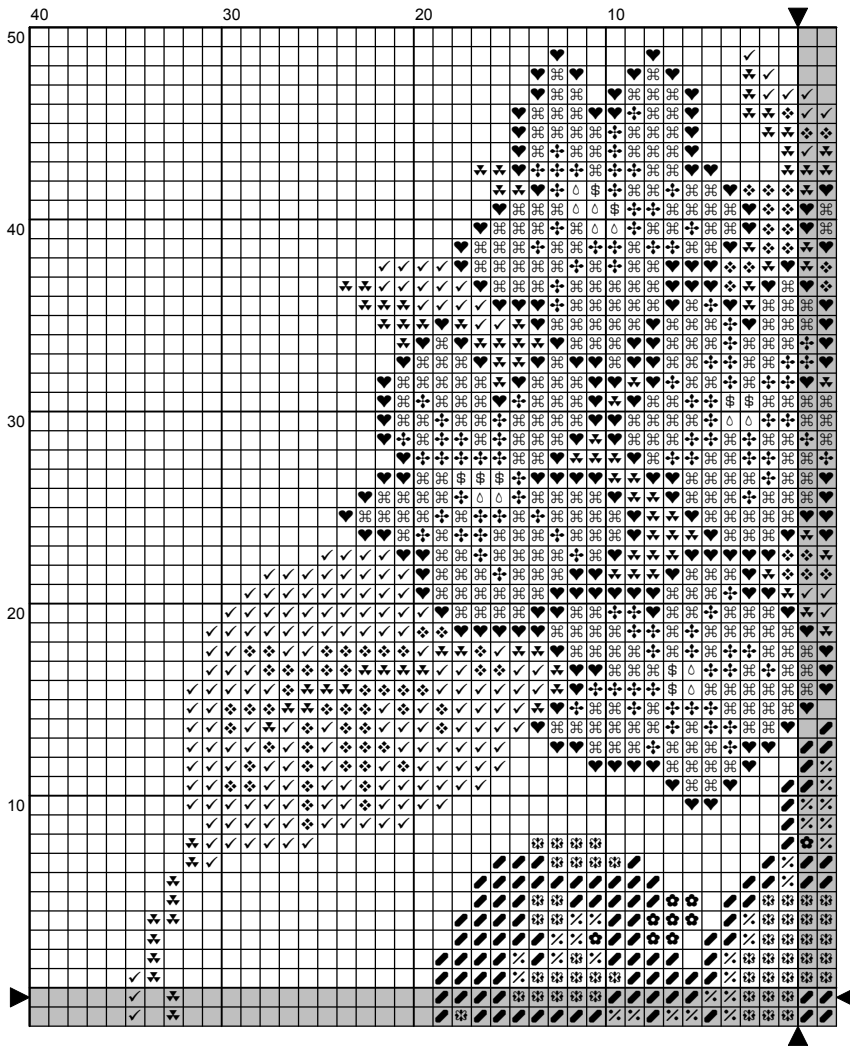
Package contains black and white chart, detailed instructions and symbols explanation

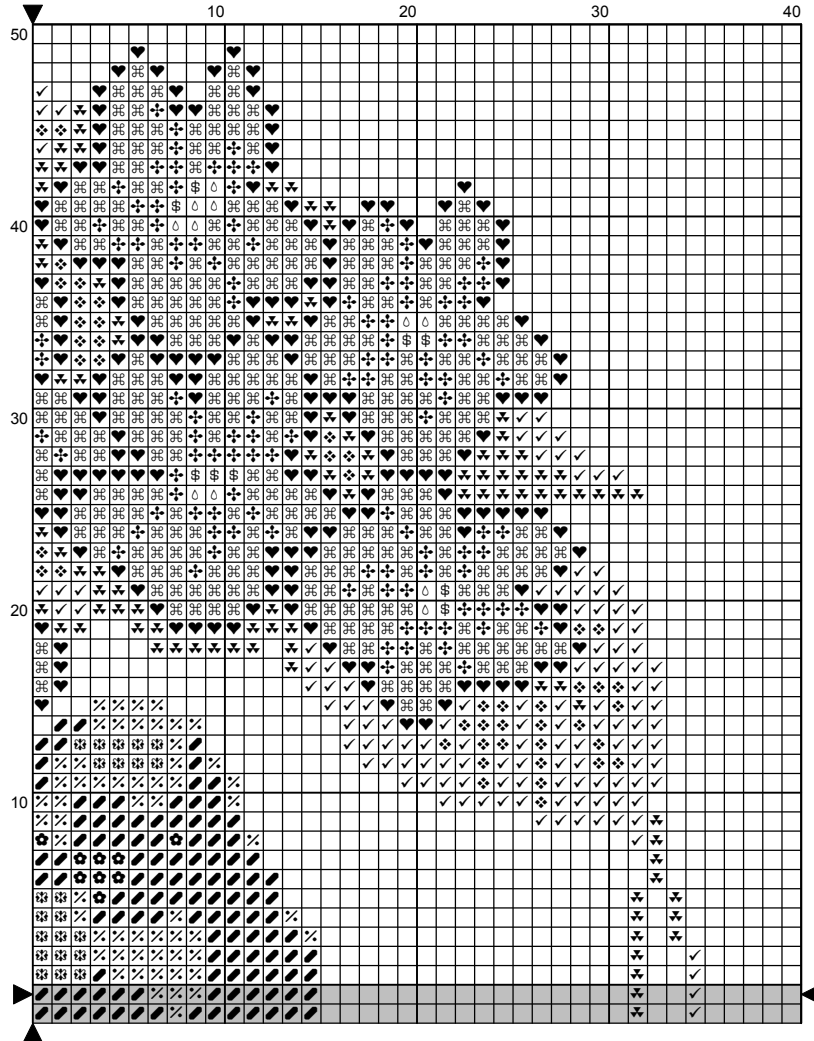
Cross Stitching Art - *The Joy of Making Art with Threads and Needle*

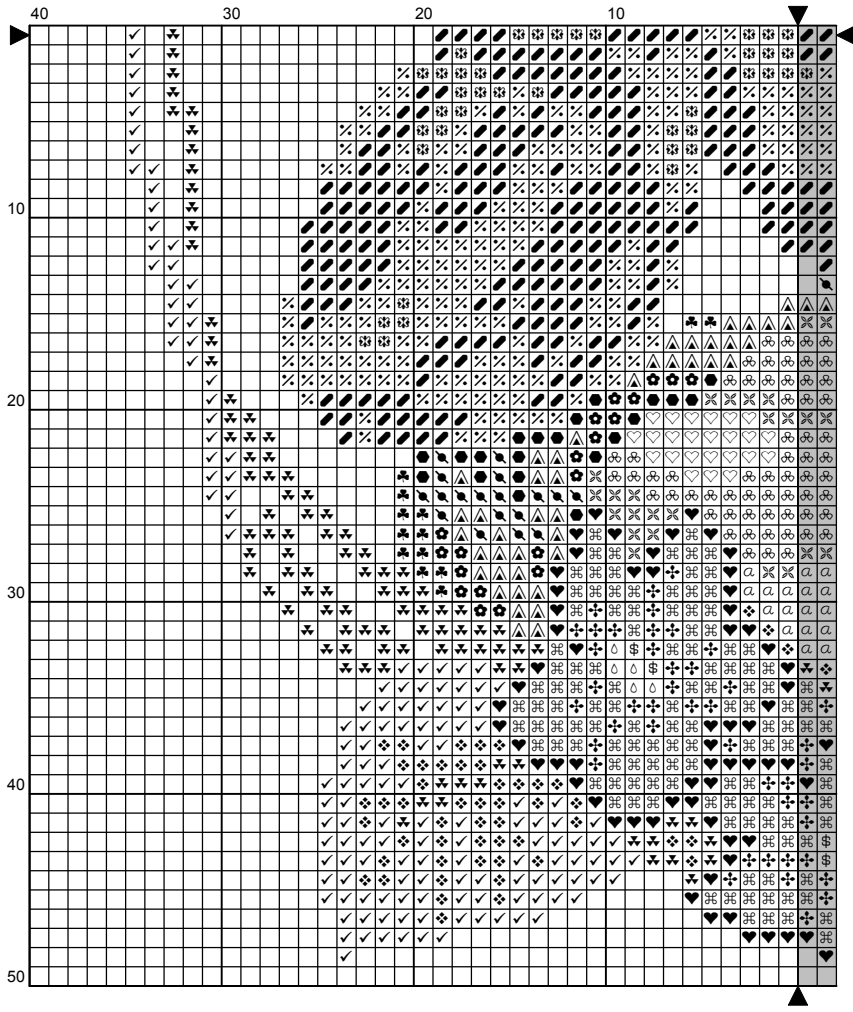
For more designs, please visit us at [www.crossstitchingart.com](http://www.crossstitchingart.com)

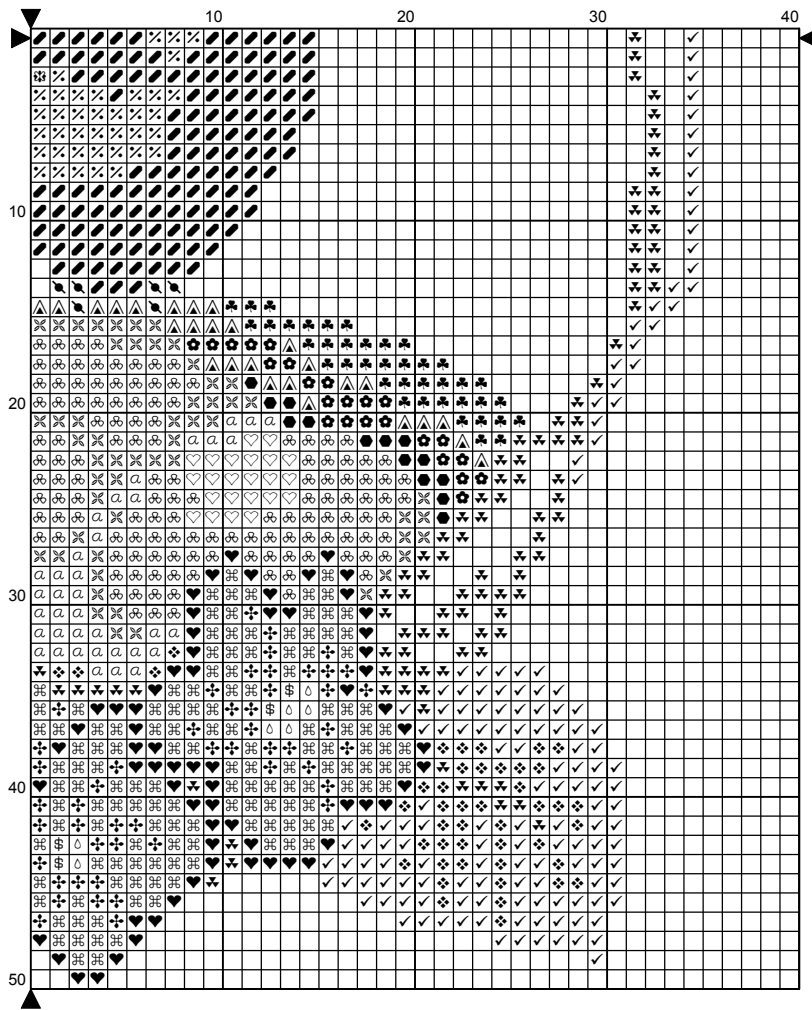
Copyright © Cross Stitching Art 2009-2011. All rights reserved.

*Cross Stitching Art*  
WITH THREADS & NEEDLE









# Instructions and Symbol Key for Design "Feathered Family"

**Fabric:** 28 count Ice Blue Evenweave

**Stitches:** 70 x 99 **Size:** 5.00 x 7.07 inches or 12.70 x 17.96 cm for 14 ct. Aida or 28 ct. Linen  
**Size:** 4.38 x 6.19 inches or 11.11 x 15.72 cm for 16 ct. Aida or 32 ct. Linen

**Colours:** DMC

Use **2** strands of thread for cross stitch

<u>Sym</u>	<u>No.</u>	<u>ColourName</u>	<u>Sym</u>	<u>No.</u>	<u>Colour Name</u>
♥	309	Dark raspberry rose	✦	335	Dark rose
∞	712	Cream	✧	725	Sunlight yellow
♣	729	Honey gold	☞	740	Orange
🍷	742	Light tangerine	⌘	743	Medium yellow
⌘	743	Yellow - med	⊕	801	Mink brown
✧	822	Cotton cream	●	898	Teak brown
✦	987	Basil green	✦	988	Forest green
✓	989	Fennel green	α	3033	Antique silver
⌘	3326	Wildrose	◊	3823	Yellow - ultra pale
▲	3829	Ochre brown	♡	3865	Winter white

This chart has been designed and printed with our best intentions of being without mistakes. However, the possibility of human error, printing mistakes or the variation of individual stitching does exist, and we regret that we cannot be responsible for this.

Cross Stitching Art - *The Joy of Making Art with Threads and Needle!*  
 For more designs please visit our online store at [www.crossstitchingart.com](http://www.crossstitchingart.com)

This chart, or any part of this design may not be reproduced in whole or in part in any form.  
 The design is for your personal use only and may not be used for re-sale, re-kit, or re-distribution in any form.

Note: The shaded blocks on the chart represent overlapping stitches.

Copyright ©Cross Stitching Art 2011 All rights reserved.