

Cross Stitching Art



“ Magic Wishes”

A design by Cross Stitching Art in Counted Cross stitch

Stitched on 28 count Navy Blue Jobelan

Finished size is 12.29 x 8.57 inches or 31.21 x 21.77 cm

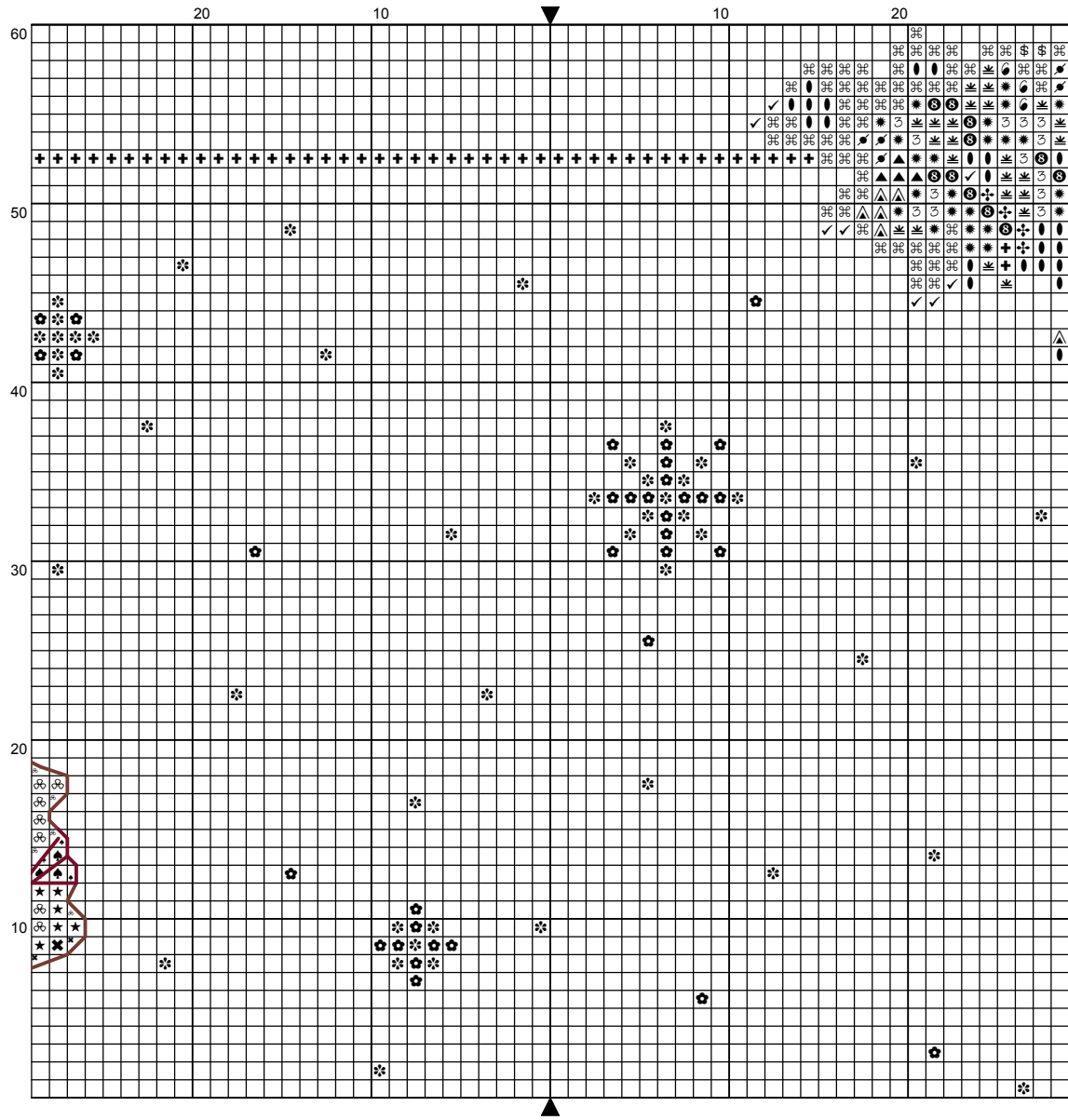
Size in stitches: 172 x120

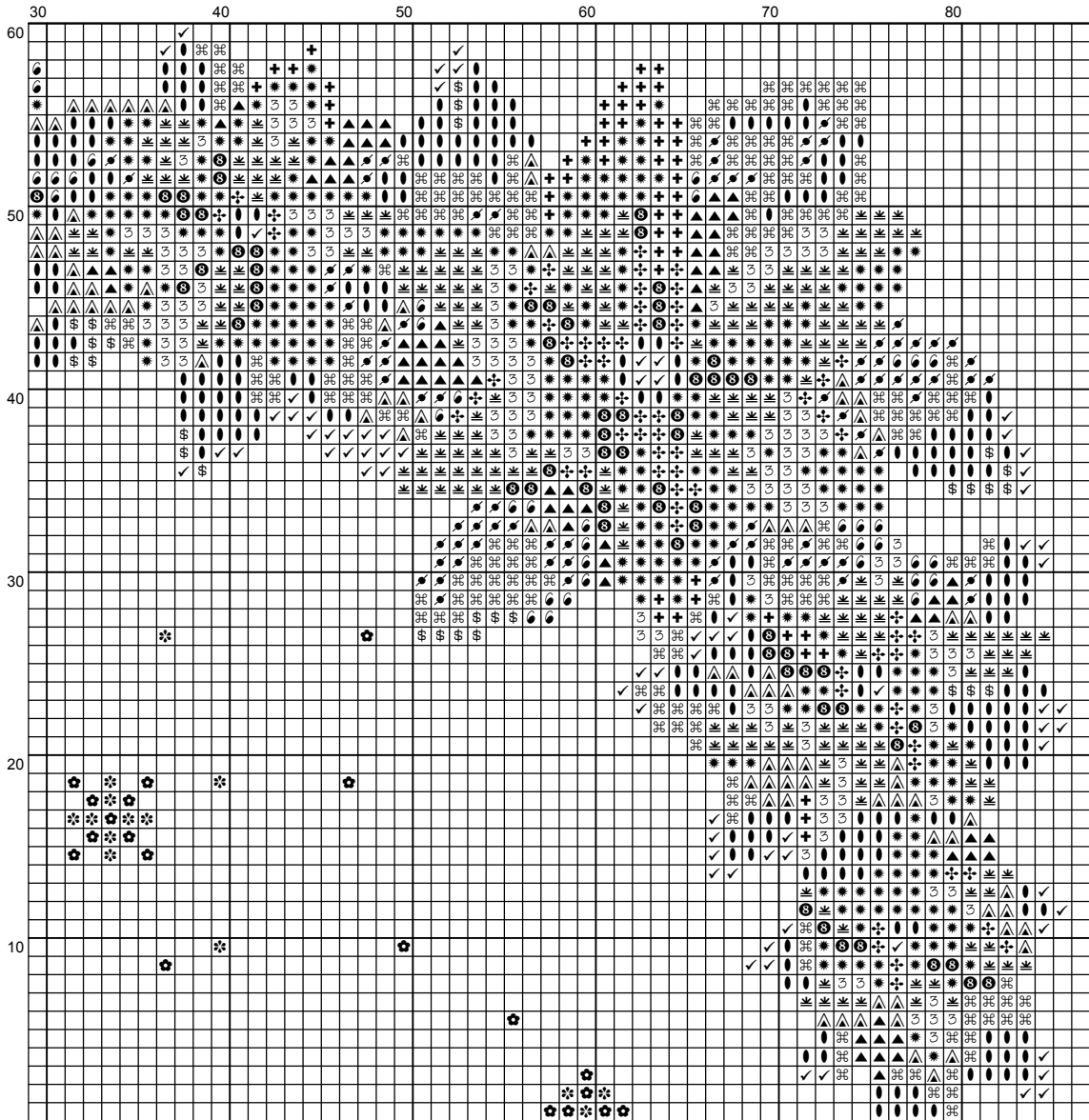
Materials used: 33 DMC colors, 3 Mill Hill beads packs

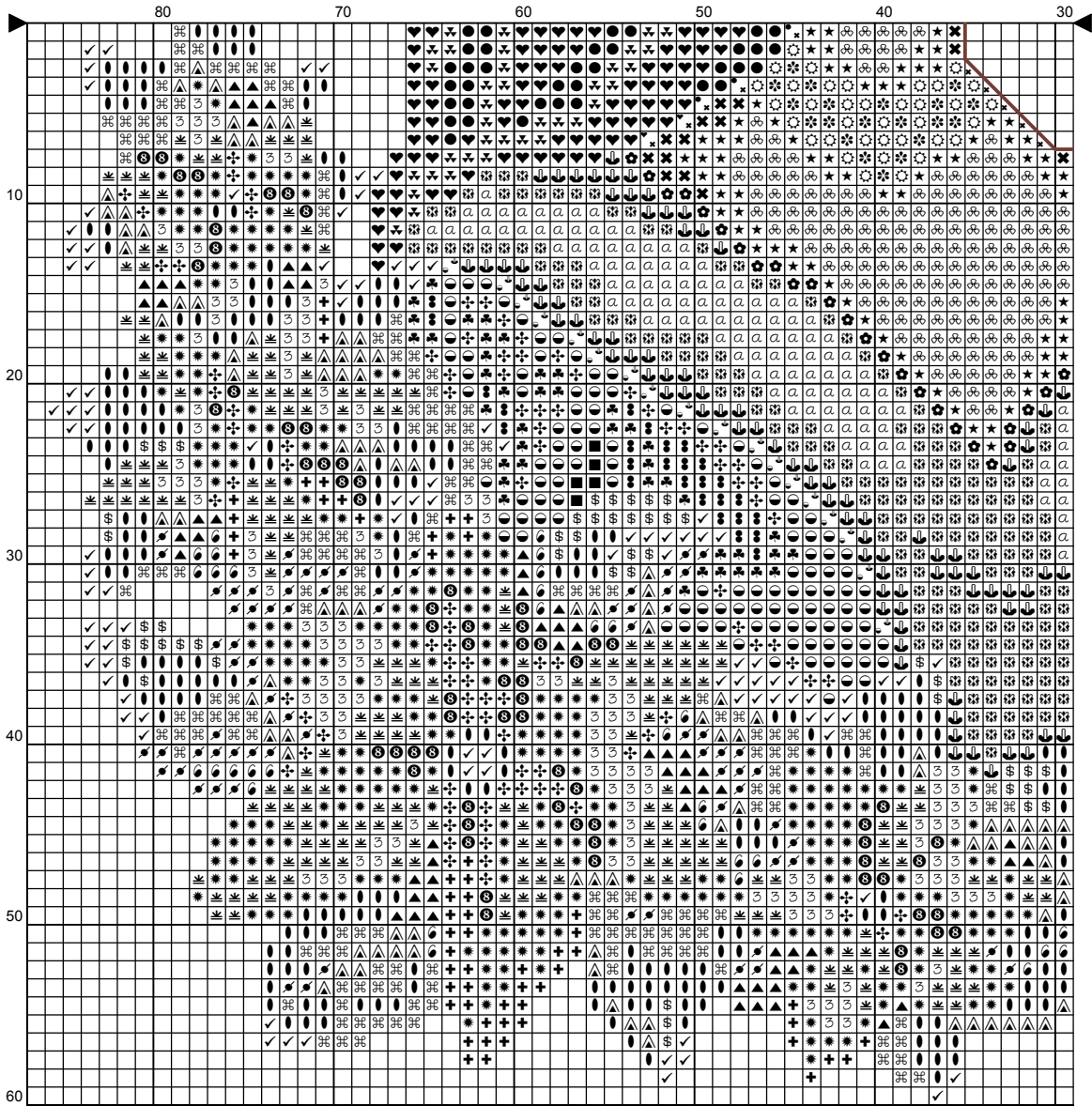
Package contains b/w chart, detailed instructions and symbol chart explanations

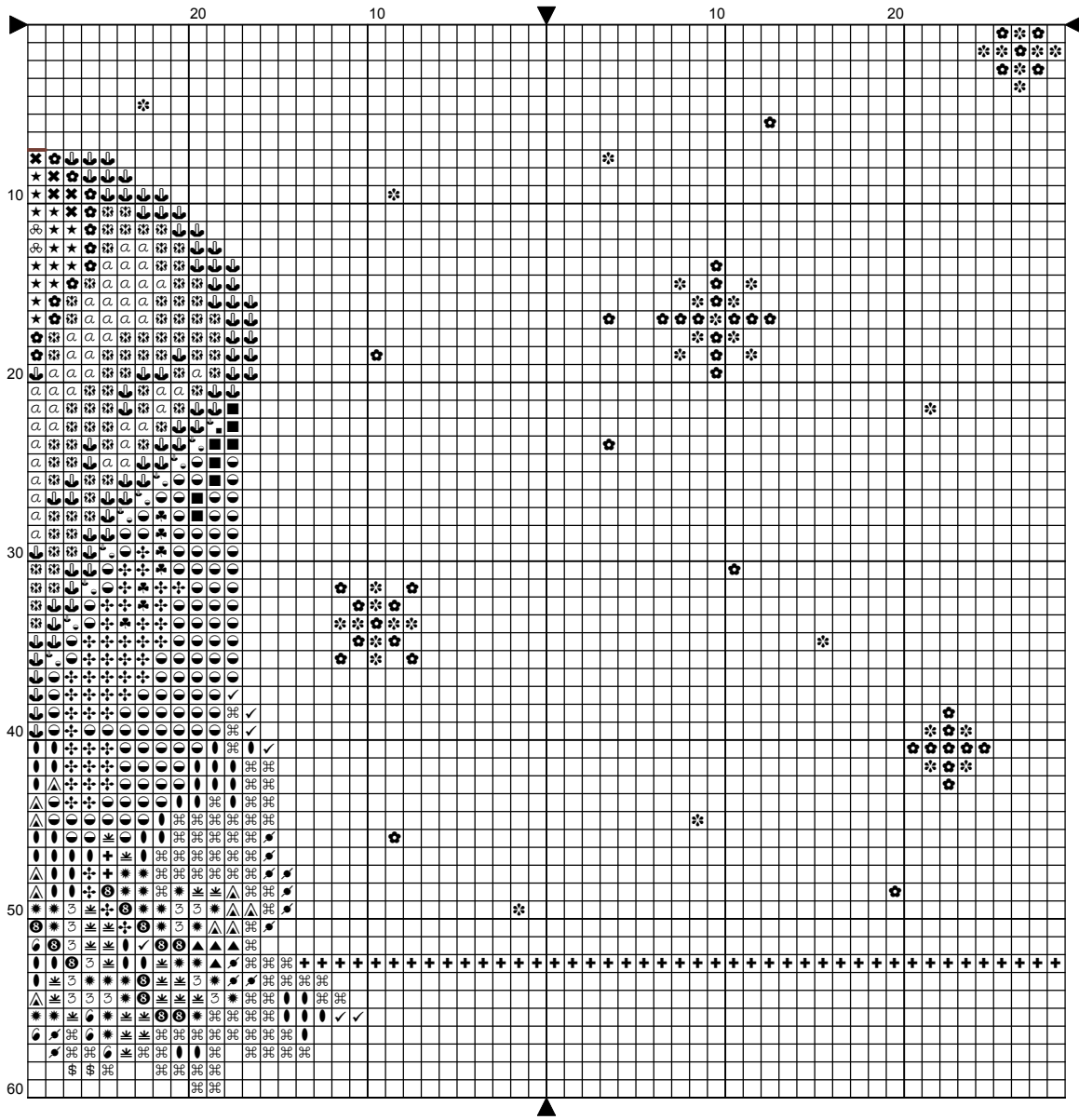
For more designs, please visit our online store at www.crossstitchingart.com

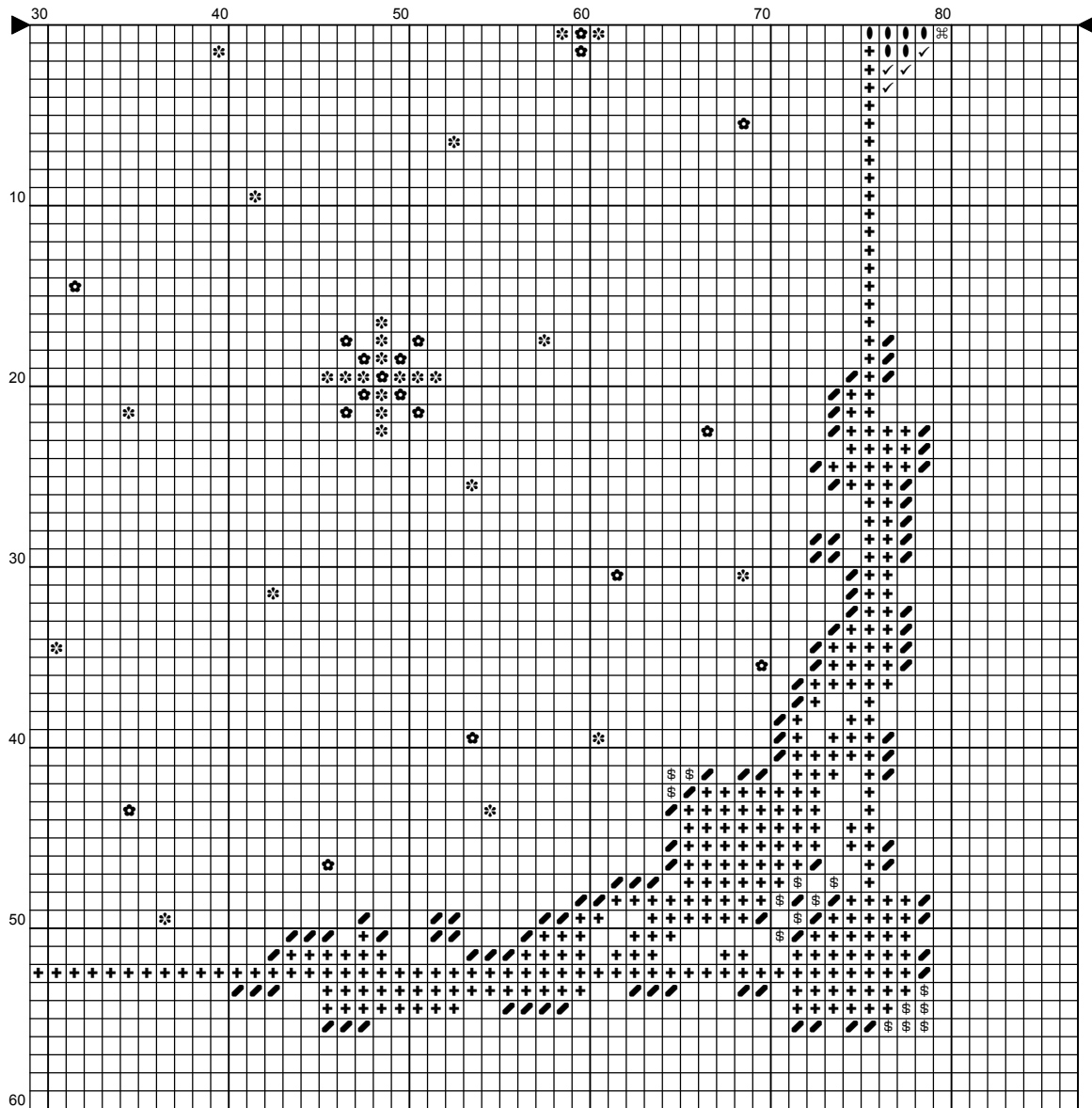












Instructions and Symbol Key for Design "Magic Wishes"

Fabric: 28 count Navy Blue Evenweave

Stitches: 172 x 120 **Size:** 12.29 x 8.57 inches or 31.21 x 21.77 cm for 28 count

Colours: DMC **Size:** 10.75 x 7.50 inches or 27.30 x 19.05 cm for 32 count

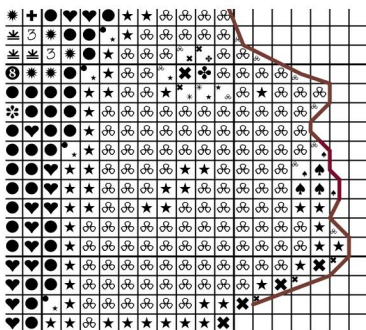
Use 2 strands of thread for cross stitch

Sym	No.	Colour Name	Sym	No.	Colour Name
☞	777	Wine red	☞	948	Pale peach
★	967	Pale apricot	✕	758	Dawn rose
♠	3832	Strawberry	♣	931	Blue grey
✱	822	Cotton cream	♥	3799	Anthracite grey
✚	413	Iron grey	●	310	Black
■	154	Prune rose	◐	814	Deep wine red
✚	815	Cherry red	♣	3777	Leather red
●	919	Red copper	☞	762	Pearl grey
☼	3756	Cloud blue	α	3865	Winter white
▲	934	Algae green	♣	3345	Dark Hunter Green
◐	895	Bottle green	⌘	987	Basil green
▲	937	Moss green	●	988	Forest green
✓	704	Lime green	⌘	989	Fennel green
⊗	816	Red fruit	+	817	Japanese red
✱	349	Chilli red	⌘	3801	Tulip red
☺	606	Red orange	⊗	02026	Millhill Beads
✱	02010	Millhill Beads	⊗	02013	Millhill Beads

Use 1 strand of thread for backstitch

	DMC 632	Cocoa	- skin
	DMC 938	Espresso brown	- eye, eyebrow
	DMC 777	Wine red	- lips

Please use the close up veiw of the face with backstitch removed below for convenience.



This chart, or any part of this design may not be reproduced in whole or in part in any form. The design is for your personal use only and may not be used for re-sale, re-kit or re-distribution in any form.

Cross Stitching Art - They Joy of Making Art with Threads and Needle!

For more designs, please visit us at www.crossstitchingart.com

This chart has been designed and printed with our best intentions of being without mistakes. However, the possibility of human error, printing mistakes or the variation of individual stitching does exist, and we regret that we cannot be responsible for this.