

Cross Stitching Art



“Romantic Couple ”

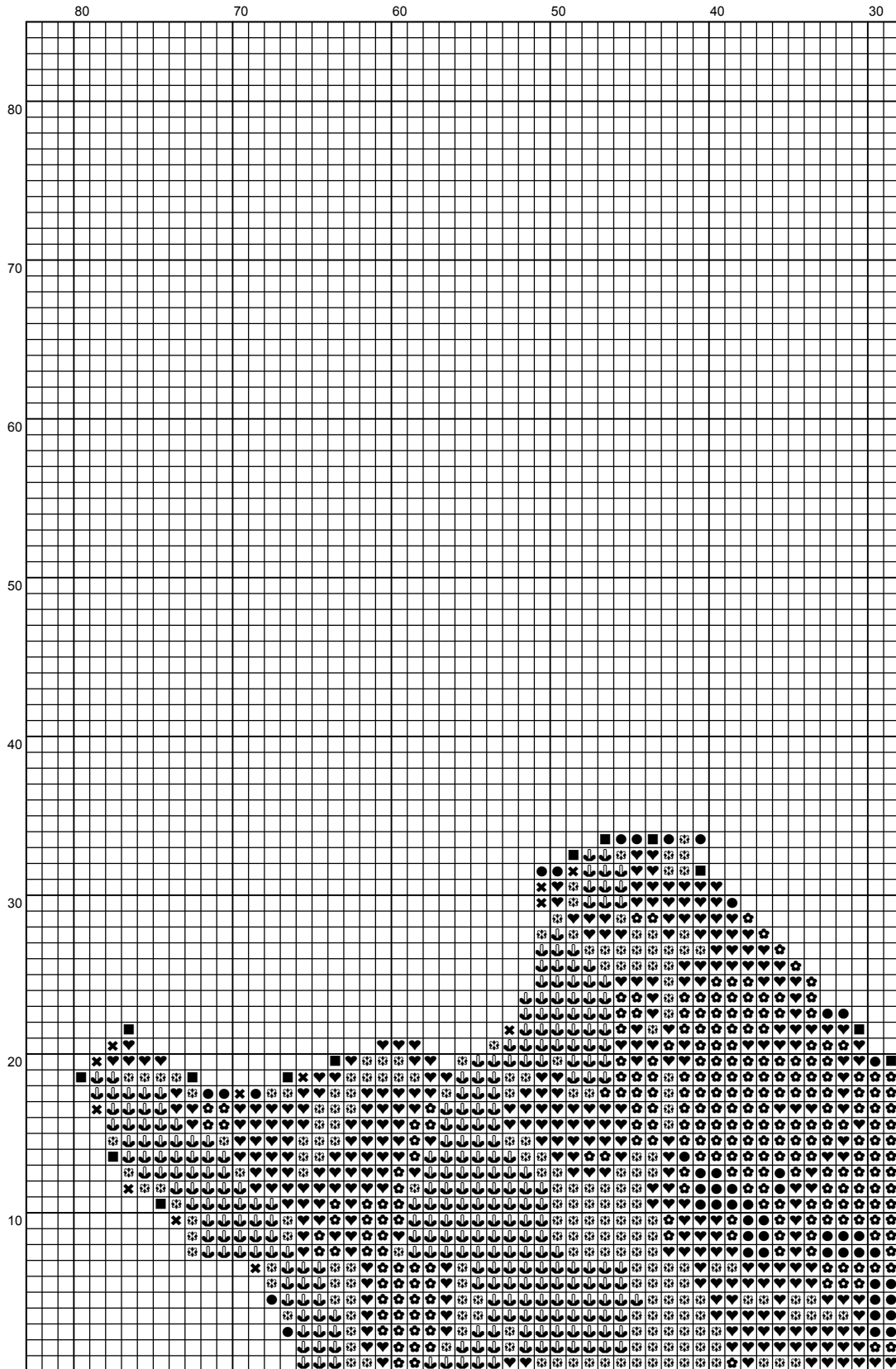
A design by Cross Stitching Art in Counted Cross Stitch

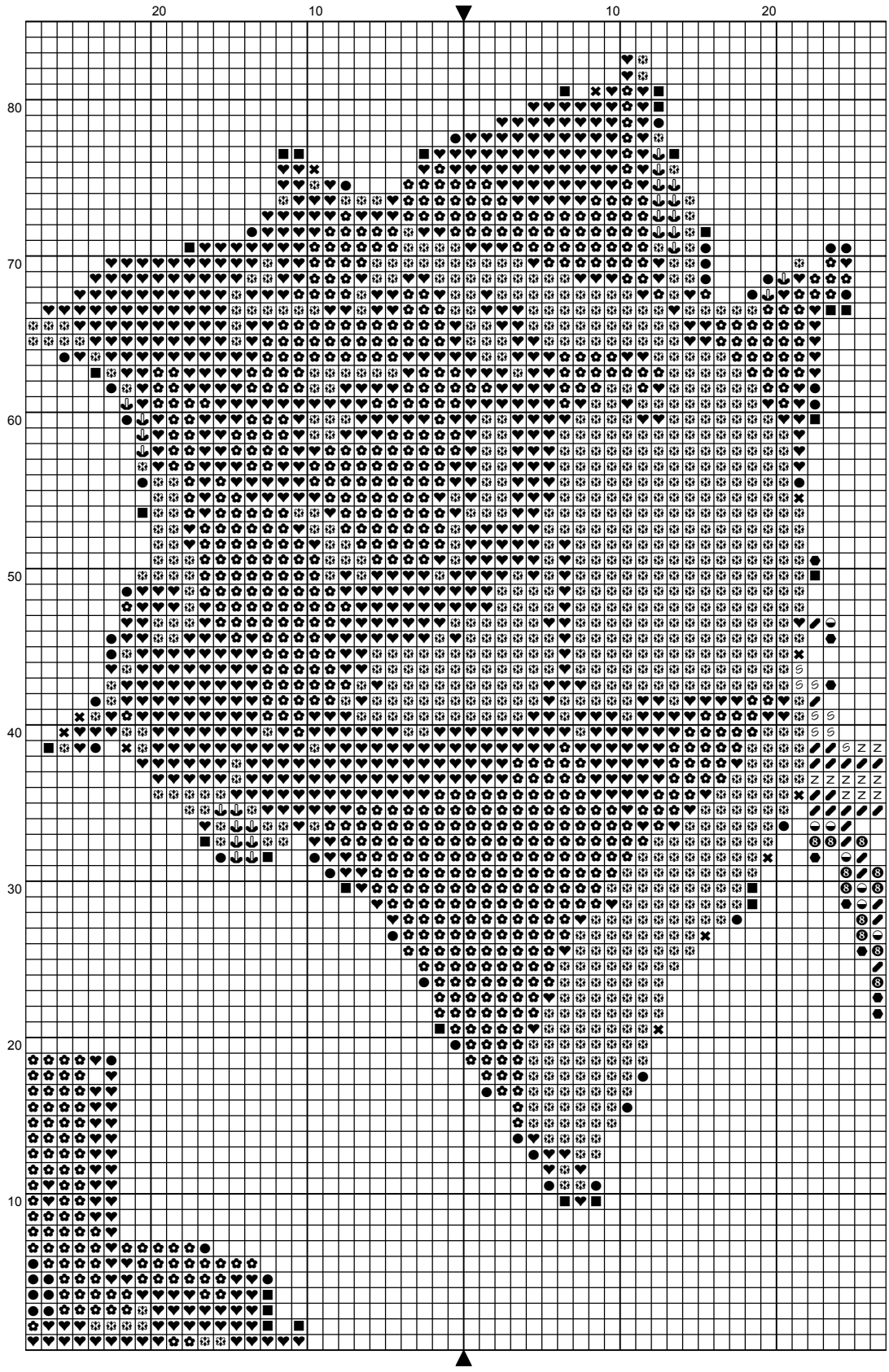
Pattern stitched on 18 count Aida, black. DMC Threads used, 13 colors. Package contains black and white pattern, detailed instructions and chart symbol explanation.

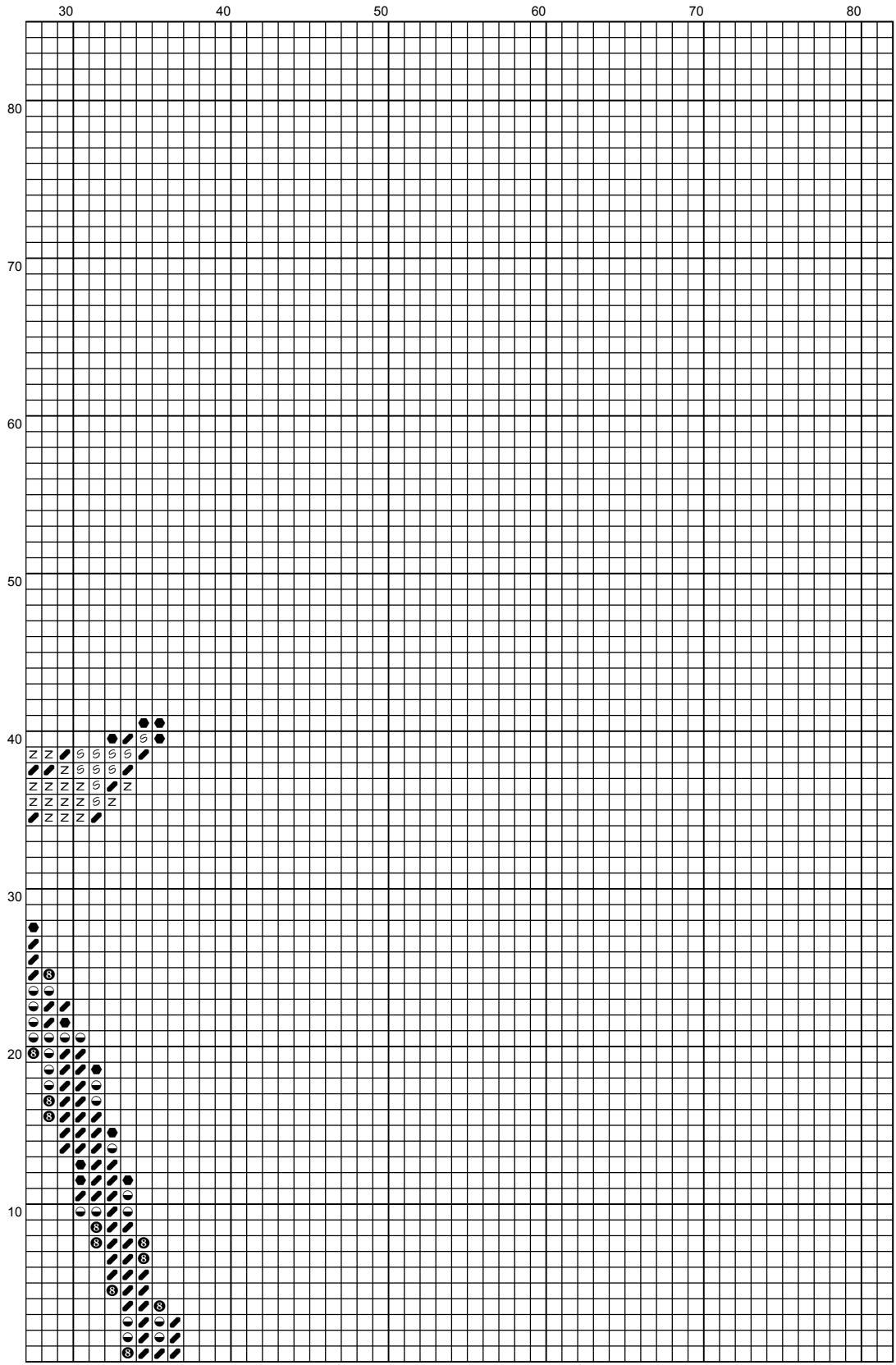
Finished Size: 9.00 x 9.22 inches or 22.86 x 23.42 cm

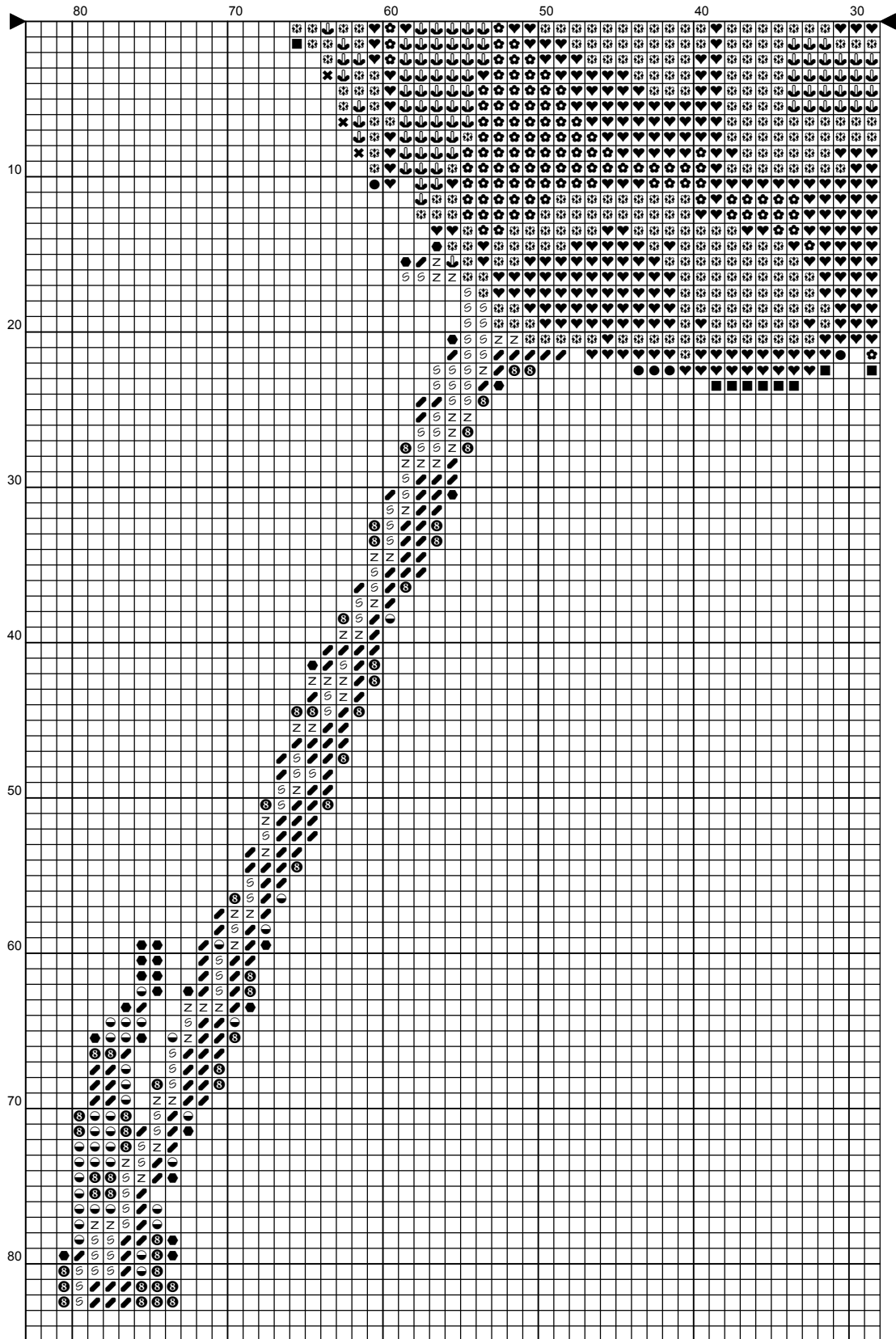
Stitched Area: 162 x 166

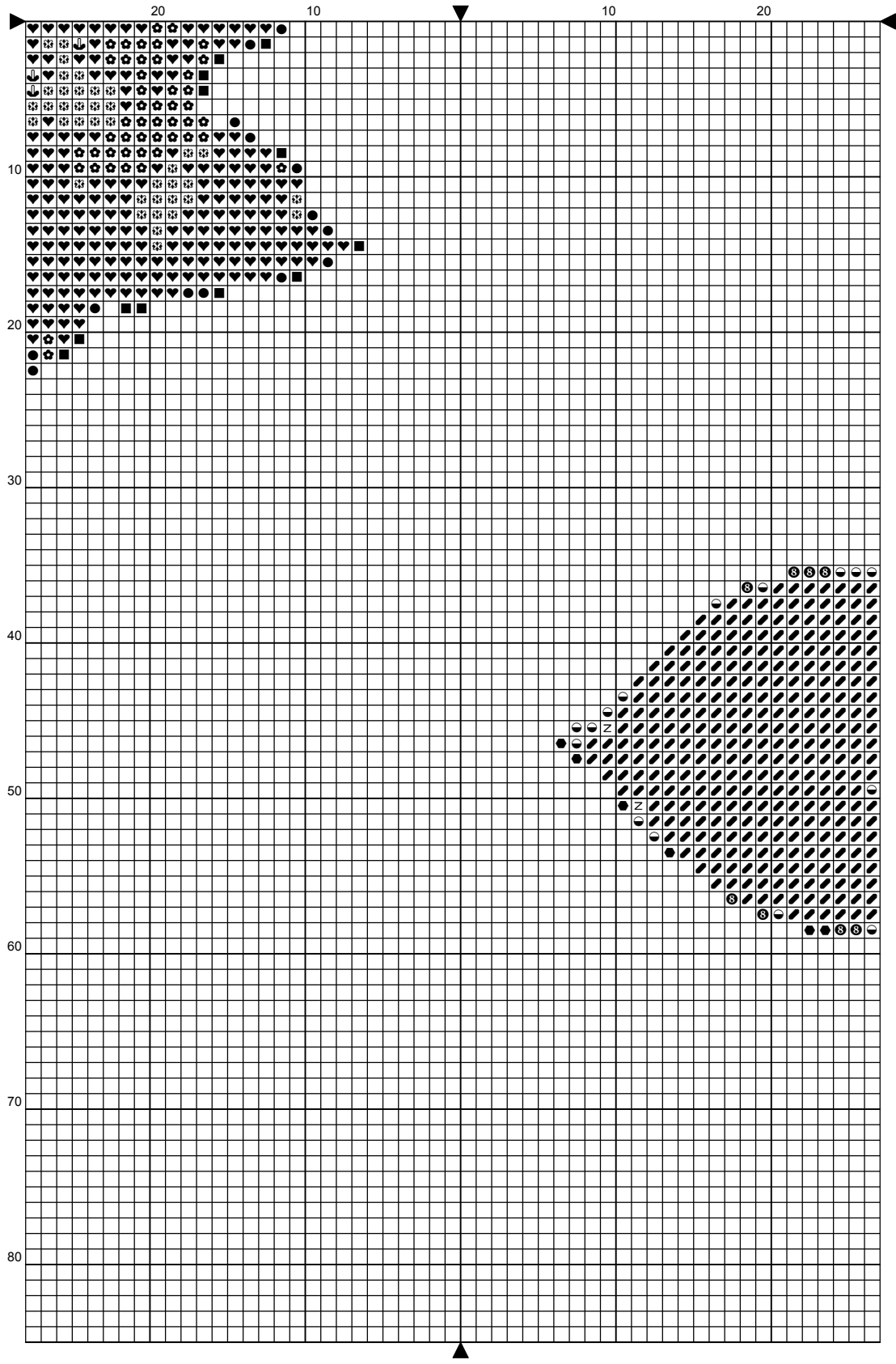
For more patterns, please visit our online store at www.crossstitchingart.com

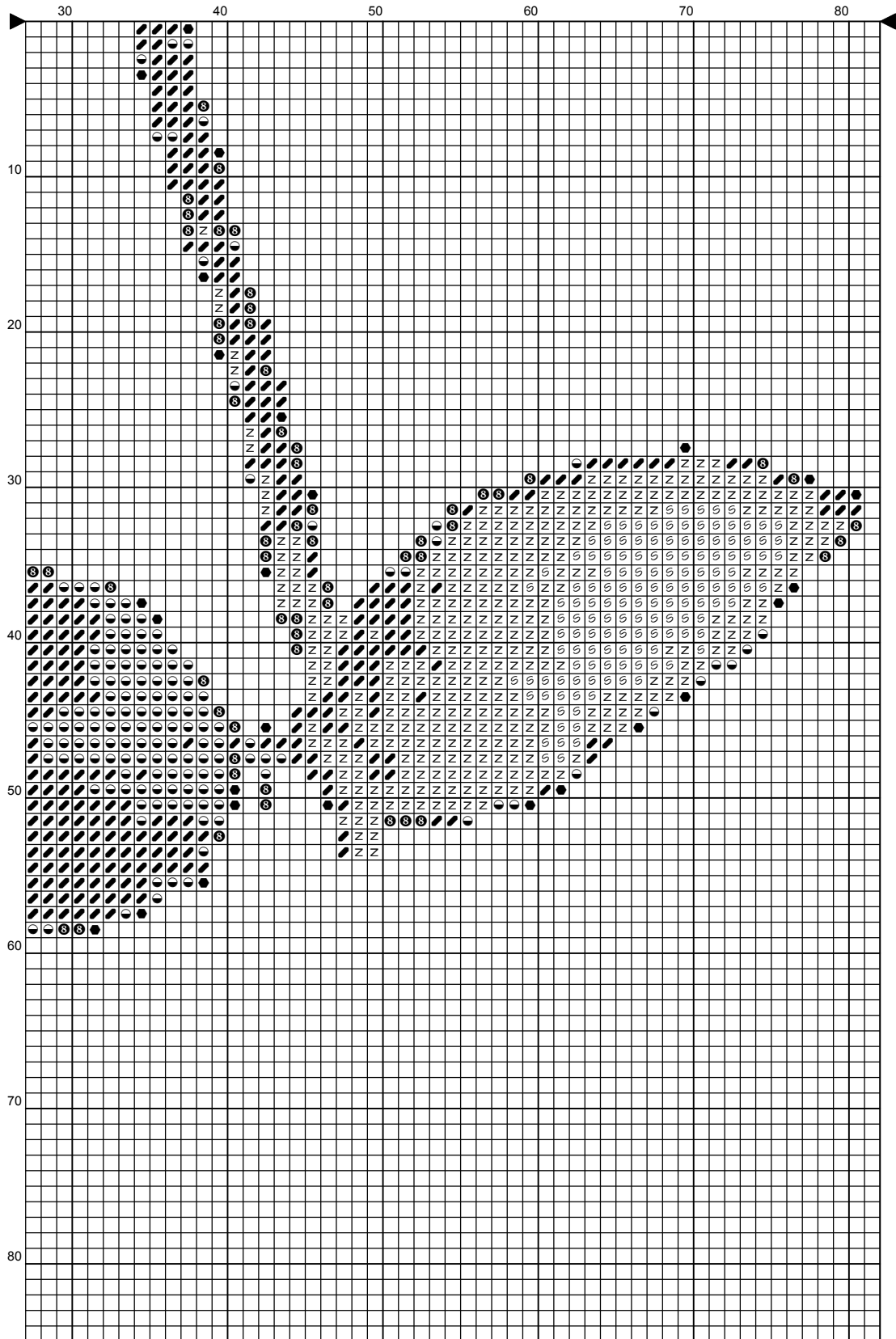












Instructions and Symbol Key for Design "Romantic Couple"

Fabric: 18 count Black Aida

Stitches: 162 x 166 **Size:** 9.00 x 9.22 inches or 22.86 x 23.42 cm

Colours: DMC

Use 2 strands of thread for cross stitch

<u>Sym</u>	<u>No.</u>	<u>ColourName</u>	<u>Sym</u>	<u>No.</u>	<u>Colour Name</u>
■	154	Prune rose	♥	350	Red vermillion
✿	351	Coral	♣	817	Japanese red
●	814	Deep wine red	↓	894	Rose pink
✕	221	Mars red	♣	701	Lawn green
Z	702	Fresh green	∞	913	Jade green
●	934	Algae green	⊕	890	Deep forest green
◐	895	Bottle green			

This chart has been designed and printed with our best intentions of being without mistakes. However, the possibility of human error, printing mistakes or the variation of individual stitching does exist, and we regret that we cannot be responsible for this.

Cross Stitching Art - The Joy of Making Art with Threads and Needle!

For more designs please visit our online store at www.crossstitchingart.com

This chart, or any part of this design may not be reproduced in whole or in part in any form.
The design is for your personal use only and may not be used for re-sale, re-kit, or re-distribution in any form.